

# Oracle Prime Projects Cloud Service

## ORACLE<sup>®</sup> Construction and Engineering

Oracle Prime Projects Cloud Service is a complete, cloud-first success platform for all stages of the project lifecycle. It empowers executives, project managers, and field professionals to deliver projects—from inception through completion—more efficiently, consistently, and with greater confidence. Real-time visibility into project cost, schedule, risk and performance information—delivered through powerful and flexible dashboards and reports—enables project managers and stakeholders to make the right decisions at the right time. Native social collaboration, including discussion capabilities, allows project teams to communicate and collaborate effectively for more precise project planning, monitoring, and execution.

### THE BIG PICTURE

Oracle Prime Projects Cloud Service helps organizations improve project management by enabling them to prioritize, plan, manage, and evaluate projects via an integrated cloud-based solution.

A cloud-based, mobile-ready solution, Oracle Prime optimizes and integrates critical processes, scope, schedules, cost data, and documents across the organization. Users can easily configure its intuitive user interface to their unique business needs to increase adoption, minimize training, and deliver rapid time to value.

### Portfolio Management

Oracle Prime provides a portfolio-based view of project information, including the proposed project pipeline, estimated budgets, capital spend, and fund allocation requirements. Portfolio managers can evaluate scenarios and arrive at an optimal plan to allocate financial budgets and other resources across multiple projects that are in-line with strategic goals. In addition, users can monitor portfolio health, track performance, and balance portfolios via alignment with corporate strategic goals.

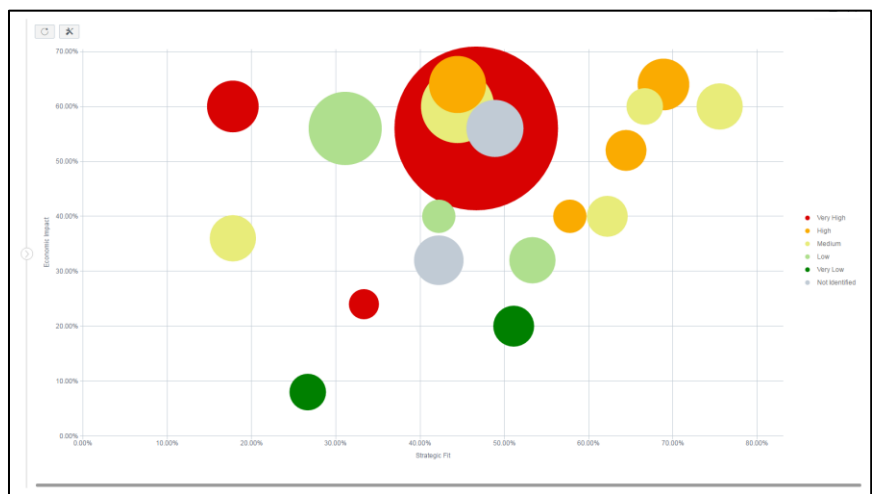


Figure 1A. Investor map capability for project portfolio evaluation

## KEY BUSINESS BENEFITS

- Integrate portfolios, cost, schedule, and quality solutions under a single platform
- Improve decision making with end-to-end visibility across projects and proposals and real-time insight into portfolio activity, status, and metrics
- Enable continuous communication and collaboration between stakeholders
- Reduce complexity with a single solution for resource, risk, field collaboration, and document management
- Position business to benefit from combined power of Lean and Critical Path Method (CPM) scheduling
- Benefit from low cost of entry, rapid time to value, high performance, and extensibility with a cloud solution
- Save time and money and accelerate user adoption with an intuitive and flexible interface and simple deployment
- Improve productivity with mobile capabilities that provide access to data on the go
- Empower users with more autonomy and a greater contribution to value added work

Oracle Prime's portfolio management capability provides comprehensive, long-range tools for capital planning and budget approval across project portfolios. Configurable performance scorecards monitor the lifecycle of portfolios based on key metrics and enables portfolio planners, executives, stakeholders, and project managers to propose, inventory, prioritize, and select projects in a collaborative fashion and take corrective action when necessary.

Projects & Proposals	Evaluation Score	Strategic Fit			Economic Impact			Feasibility		
		Direct Cloud Growth	Market Positioning	Capabilities	Market Size	Cost/Benefit	Geographic Impact	Technical Risk	Resources - Financial	Resources - People
Cloud Accelerator	53.55%	Low	Medium	Low	High	High	Medium	Very Low	Low	Medium
Strategic Initiatives	60.21%	Medium	High	High	High	Very High	Very Low	Low	Very High	Low
Primavera Implementation	54.80%	Low	Medium	Medium	Low	Medium	High	Very Low	Medium	High
IT Infra Development	67.31%	Very High	Very Low	Low	Very High	High	Very Low	High	Very High	Low
Process Improvement	56.51%	Medium	Low	Very High	Medium	High	Very Low	Very Low	Medium	Low
City Center Office Building Addition	52.09%	Low	Medium	Low	Low	Low	High	Medium	Medium	Low
Hatbang Corporate Park	51.05%	Very Low	Low	Low	Medium	Low	Medium	Low	Medium	Very High
Hatbaur Pointe Assisted Living Cen	49.55%	Low	Low	Low	Low	Low	High	Low	Low	Medium
Juniper Nursing Home	67.33%	High	Low	Low	High	Medium	Very Low	Low	Very High	Medium
Drifwood - Retail Outage	43.06%	Very Low	Low	Low	Medium	Low	Medium	High	Low	Low
Red River - Retail Outage	65.64%	High	Low	Medium	High	High	High	Very Low	Low	Low
Ballroom, TX - Office Maintenance	51.39%	Low	Low	Low	Medium	Medium	Low	High	High	Medium
Cloud Success	58.50%	Medium	Medium	High	Medium	Medium	Low	High	High	Low
Milton Solar Proposal	62.49%	High	Low	Very Low	Medium	High	Medium	Low	Low	Very High
Primavera Consulting	56.67%	Medium	Low	High	Very Low	Low	Low	High	High	Low
Sales Consulting	56.45%	Low	Very High	Medium	High	Medium	Very Low	High	High	Low
Prime Consulting	58.00%	Medium	High	Very Low	Medium	High	High	Very High	High	High
Cloud Consulting	63.11%	High	Low	Medium	Low	Low	High	Very High	Low	High
Implementation Consulting	44.71%	Low	Very Low	Low	Very Low	High	Low	Very Low	Very High	Medium

Figure 1B. Top-down portfolio prioritization for project ranking and selection

## Scope Management

Project managers need a set of tools to effectively manage the entire scope of work required to deliver a product or service. Oracle Prime Projects Cloud Service allows project managers and schedulers to effectively and cohesively plan and manage all aspects of scope during a project's lifecycle, including equipment deployment, cable and line installation, and project documentation—from a single platform. It also enables other stakeholders to monitor project deliverables from the same solution.

Name	ID	Unit of Measure	Original Quantity	Original Productivity Rate	Original Hours	Revised Quantity
Oil and Fuel Storage Tank	OF ST-001					
Default PB5	Default PB5					
TANK	TANK					
Tank Shell Plate Shop Fabrication	TANK.TANK.2					
Tank Accessories and Fittings Shop Fabrication	TANK.TANK.3					
GA Drawing Tank Platform and Handrail	TANK.TANK.3.DWG-04					
GA Drawing Tank Internal Accessories	TANK.TANK.3.DWG-07					
Center Deck Leg	S2230	Kg	140.00kg	0.23h/kg	31.78h	140.00kg
Gauge Pole	S2240	Kg	200.00kg	0.23h/kg	45.40h	200.00kg
Pontoon Leg	S2220	Kg	210.00kg	0.23h/kg	47.67h	210.00kg
GA Drawing Shell and Roof Nozzles	TANK.TANK.3.DWG-08					
Roof Nozzles	S2260	Kg	70.00kg	0.63h/kg	43.75h	70.00kg
Shell Nozzles	S2250	Kg	90.00kg	0.63h/kg	56.25h	90.00kg
GA Drawing Rolling Ladder & Rails	TANK.TANK.3.DWG-06					
Handrail	S2200	Kg	140.00kg	0.19h/kg	26.18h	140.00kg
Ladder	S1190	Kg	250.00kg	0.19h/kg	46.75h	250.00kg
Rail Track	S2110	Kg	280.00kg	0.19h/kg	52.36h	280.00kg

Figure 2A. Oracle Prime Projects is a comprehensive project scope management tool

The solution supports various progress measurement techniques, such as physical percent complete and rules of credit, to measure scope progress. In addition, users can assign quantity-based progress metrics to individual scope to capture progress percent complete.

## KEY FEATURES

- Context-driven rich and lightweight user interface
- Global search and navigation to major functional areas
- Built-in workflows with an option to expand via configuration
- Web-based interface with no client installation or plug-ins
- Review and approval of updates to ensure project integrity
- Embedded analytics
- iPad and iPhone applications support updating project status online or offline
- Ability to access all project documents via a mobile device, mark them up, and save locally for offline access

## Cost Management

Cost management allows project managers and key stakeholders to capture budget, perform forecast analysis, and predict impending expenses to help reduce the chance of going over budget. Oracle Prime Projects Cloud Service allows project managers to manage the most basic to complex cost management scenarios with ease.

CBS Code *	CBS Code Name	Current Budget (Manual/Approved)	Total Budget Changes (Manual/Pending)	Budget Changes (Manual/Approved)	Project Current Budget	Project Current Forecast	Variance
Total		9,797,918.31	5,000.00	1,112,377.00	9,797,918.31	9,812,918.31	15,000.00
+ Add CBS code							
00	Division 0 - Contracting Requirements		0.00			0.00	0.00
01	Division 1 - General Requirements		0.00			0.00	0.00
02	Division 2 - Site Construction	501,273.00	0.00	2,500.00	501,273.00	511,273.00	10,000.00
03	Division 3 - Concrete	286,985.00	0.00	2,250.00	286,985.00	286,985.00	0.00
04	Division 4 - Masonry	474,821.00	10,000.00		474,821.00	484,821.00	10,000.00
05	Division 5 - Metals	1,205,087.50	0.00		1,205,087.50	1,205,087.50	0.00
06	Division 6 - Wood & Plastics	464,656.50	0.00		464,656.50	464,656.50	0.00
07	Thermal & Moisture Protection	266,889.80	0.00		266,889.80	266,889.80	0.00
08	Division 8 - Doors & Windows	305,299.75	0.00		305,299.75	305,299.75	0.00
09	Division 9 - Finishes	1,307,890.40	0.00		1,307,890.40	1,307,890.40	0.00
10	Division 10 - Specialties	107,569.26	0.00		107,569.26	107,569.26	0.00
11	Division 11 - Equipment	5,632.20	0.00		5,632.20	5,632.20	0.00
12	Division 12 - Furnishings	43,200.00	0.00		43,200.00	43,200.00	0.00
13	Division 13 - Special Construction		0.00			0.00	0.00
14	Division 14 - Conveying Systems	140,000.00	0.00		140,000.00	140,000.00	0.00
15	Division 15 - Mechanical	1,785,407.40	0.00		1,785,407.40	1,785,407.40	0.00
16	Division 16 - Electrical	1,795,579.50	0.00		1,795,579.50	1,795,579.50	0.00
9999	Contingencies	1,107,627.00	(5,000.00)	1,107,627.00	1,107,627.00	1,102,627.00	(5,000.00)

Figure 3A. Cost sheet functionality provides detailed cost data to ensure projects are staying on track

Oracle Prime utilizes a spreadsheet-like interface to manage project budget, budget changes, and transfers. It also interacts with various project elements to provide a single location for managing project cost, including forecast information.

ID *	CBS Code *	CBS Code Name	Description	Cost Category	Quantity	Unit of Measure
1	02 100	Site Remediation	Site Demolitions	Material	30,000.00	sqft
2	02 200	Site Preparation	Clear & Grub Site	Material	59,400.00	sqft
3	02 200	Site Preparation	Site Earthwork & Grading (Cut & Fill)	Material	600.00	Cubic Yards
4	02 200	Site Preparation	Site Earthwork Export Surplus	Material	380.00	Cubic Yards
5	02 200	Site Preparation	Erosion Control	Material	59,400.00	Cubic Yards
6	02 700	Bases, Ballasts, Pavements, & Appurtenan...	Roadway - Concrete Parking Entry	Material	500.00	sqft
7	02 700	Bases, Ballasts, Pavements, & Appurtenan...	Parking - Concrete	Material	23,560.00	sqft
8	02 700	Bases, Ballasts, Pavements, & Appurtenan...	Sidewalks - Concrete	Material	1,500.00	sqft
9	02 500	Utility Services	Domestic Water Supply	Material	150.00	Linear Ft
10	02 500	Utility Services	Service Tie-in - Domestic	Material	1.00	Each
11	02 500	Utility Services	Fire Protection Water Supply	Material	150.00	Linear Ft
12	02 500	Utility Services	Service Tie-in - Fire Protection	Material	1.00	Each
13	02 500	Utility Services	Sanitary Waste Line	Material	150.00	Linear Ft
14	02 500	Utility Services	Service Tie-in - Sanitary	Material	1.00	Each
15	02 500	Utility Services	Manholes - Sanitary	Material	2.00	Each
16	02 500	Utility Services	Storm Drainage Line	Material	150.00	Linear Ft
17	02 500	Utility Services	Service Tie-in - Storm Drainage	Material	1.00	Each

Figure 3B. Budget management functionality provides detailed budgeting capabilities

Cost management is an integral part of Oracle Prime, delivering functional capabilities that form the backbone of strong project controls.

## Schedule Management

Project planning and scheduling are key elements of effective project management. A well-developed project schedule allows project managers to manage project

milestones, deliverables, and timelines effectively.

Prime Schedule Management is a cloud-based solution that is integrated with other Oracle Prime modules to provide a complete project management solution.

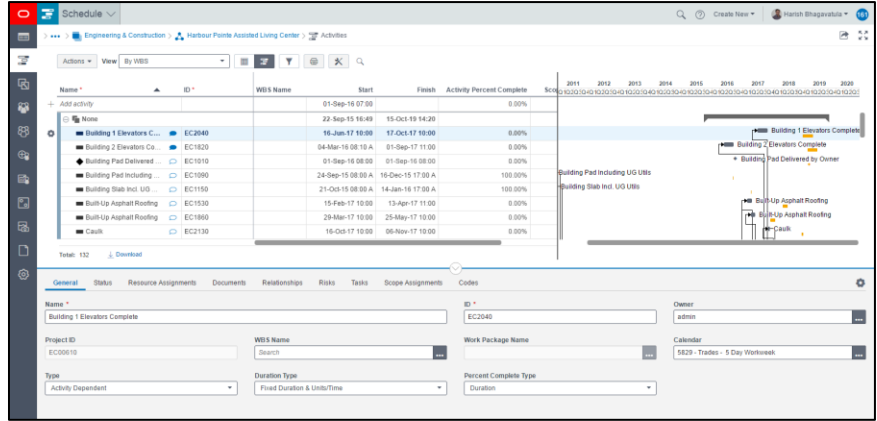


Figure 4A. Plan and schedule projects with the Schedule Management module

Interactive Gantt charts allow planners, schedulers, and project managers to communicate a more accurate and complete graphical representation of a project's schedule in real time. Oracle Prime Schedule Management also enables users to track project scope and resource assignment and proactively perform resource and role leveling.

## Resource Management

Oracle Prime Projects Cloud Service allows project managers to manage hierarchy-based resources and roles per project. Organizations also can choose to manage these roles and resources at an enterprise level and allow project managers to utilize them on need basis at project level.

Resources and roles can be assigned to activities as part of resource assignment capabilities, allowing project managers to resource load the project schedule.

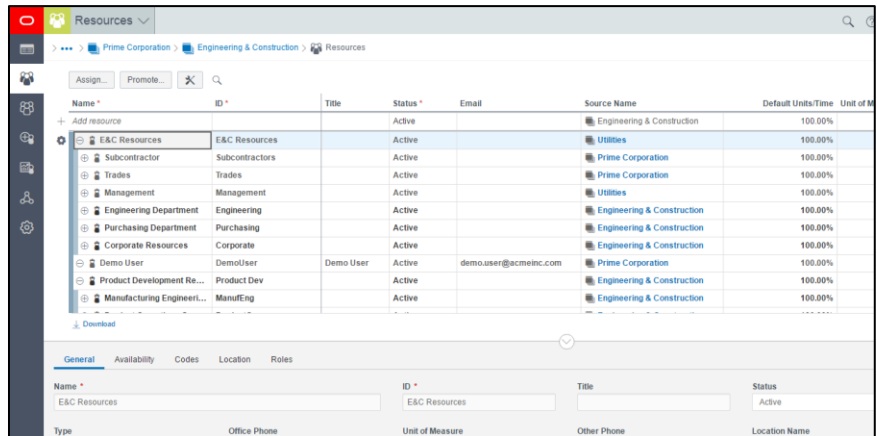


Figure 5A. Oracle Prime Resource Management allows project managers to create and manage hierarchical roles

**RELATED PRODUCTS**

Additional value can be realized from your Oracle investments with:

- Oracle’s Primavera P6 Enterprise Project Portfolio Management
- Oracle’s Primavera Gateway

Oracle Prime Resource Analysis capabilities enable users to determine over- and under-utilization of both resources and roles in real time. Visual representations of resource and role assignment analysis in the form of histograms enable project managers to rapidly analyze and determine where resources are under- or over-utilized.

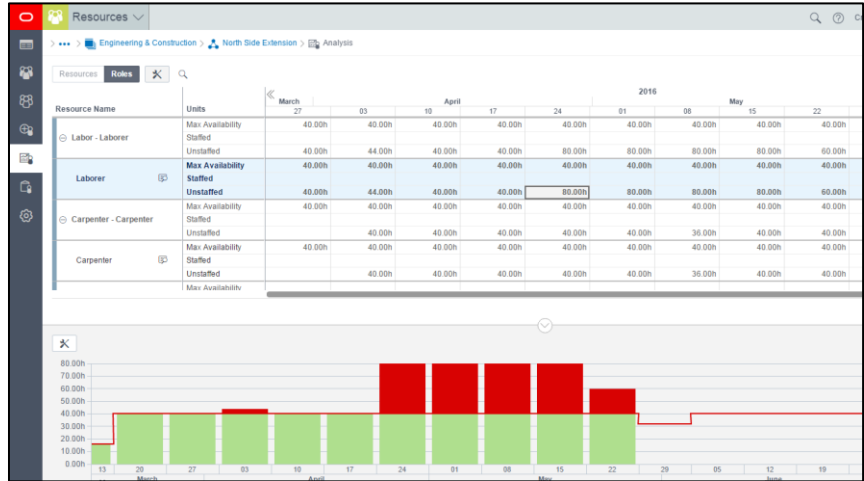


Figure 5B. Perform resource and role analysis at project level

With insight on resource utilization, project managers can take action to realign and balance resource or role assignments.

**Risk Management**

Oracle Prime risk management capabilities provide the necessary tools that allow project professionals to manage risk easily and successfully. Oracle Prime Projects Cloud Service offers the following features:

- A risk register where users can log all project risks and prioritize them based on their own risk-scoring metrics
- The ability to develop risk-response plans to address project risks and establish post-response scenarios to compare with pre-response results

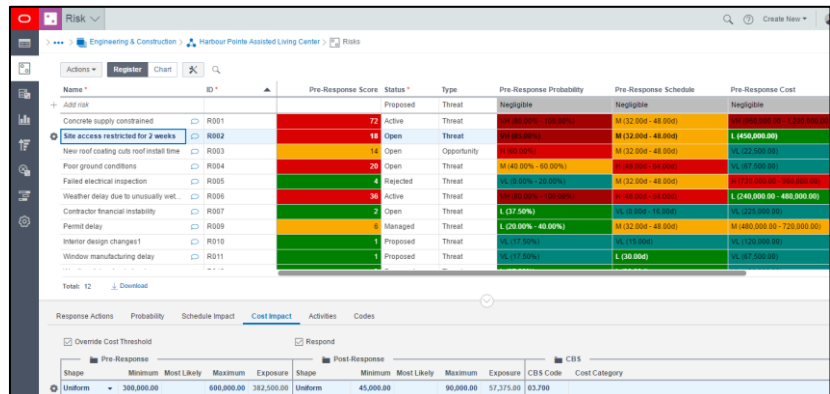


Figure 6A. Risk register with related response plan

- The ability to run a Monte Carlo analysis on a project, incorporating schedule and risk data to produce histogram curves showing expected time and cost outcomes, and the probability of achieving each one



Figure 6B. Monte Carlo-based histograms provide likely project outcomes based on potential risk, not just the planned schedule

- Mean Impact analysis to determine risk and activities that have the greatest impact on a project's schedule

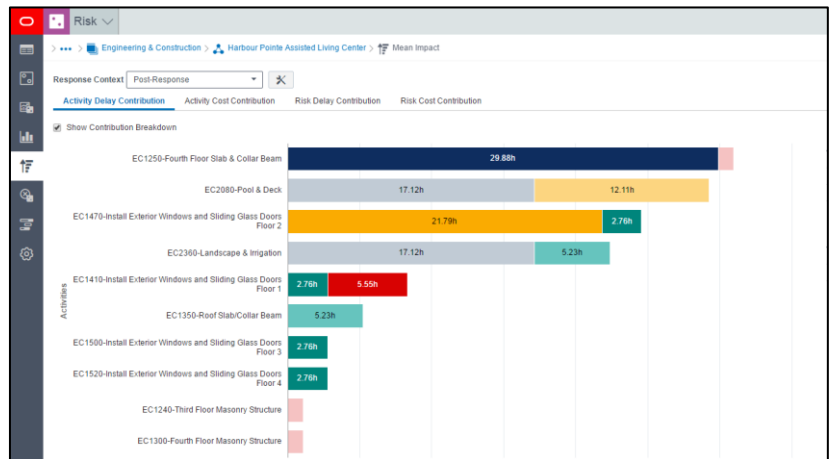


Figure 6C. Mean impact charts provide a breakdown of the contributing causes to the activity's impact

- Native risk-based workflow to manage all phases of a risk item
- Optional out-of-the-box integration with Oracle's Primavera P6 Enterprise Project Portfolio Management. The integration supports importing Primavera P6 EPPM risk data into Oracle Prime as well as pushing key risk analysis data back to Primavera P6 EPPM.

## Lean Task Management

The Oracle Prime Lean Task Management capability provides a set of tools to improve the detailed coordination, planning, and execution of work between planners, supervisors, and field workers. The tool enables field workers to decide the best way to execute their work with maximum efficiency and minimal waste.

The Work Plan interface allows planners, supervisors, and field workers to easily define, plan, and sequence their work according to the near-term objectives defined by the project schedule. LastPlanners® create tasks in the hopper on the left for each activity in the planning period. Tasks are then dragged to the weekly planning board or future weekly bucket, using the project schedule's activities as a reference.

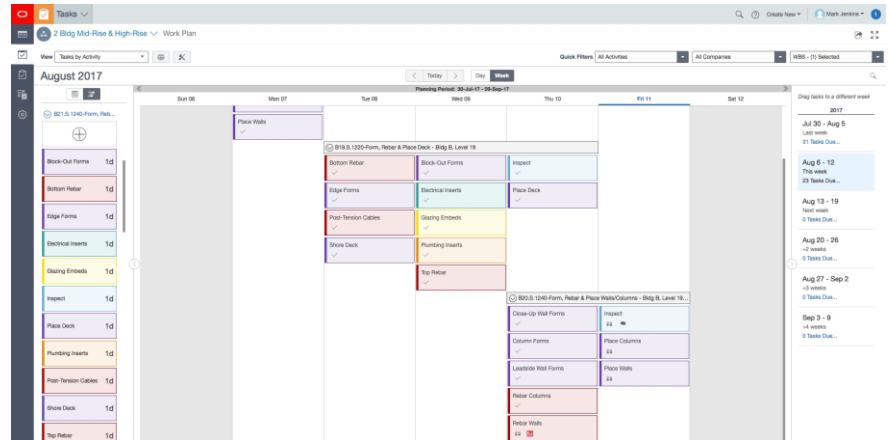


Figure 7A. The Oracle Prime work plan makes weekly planning simple

By following the process defined by the Lean Construction Institute's LastPlanner® system, project teams can easily monitor the planned percent complete for each project and individual companies. Project teams also can determine the root causes of delays and incomplete work by entering reasons for missed commitments for incomplete tasks.

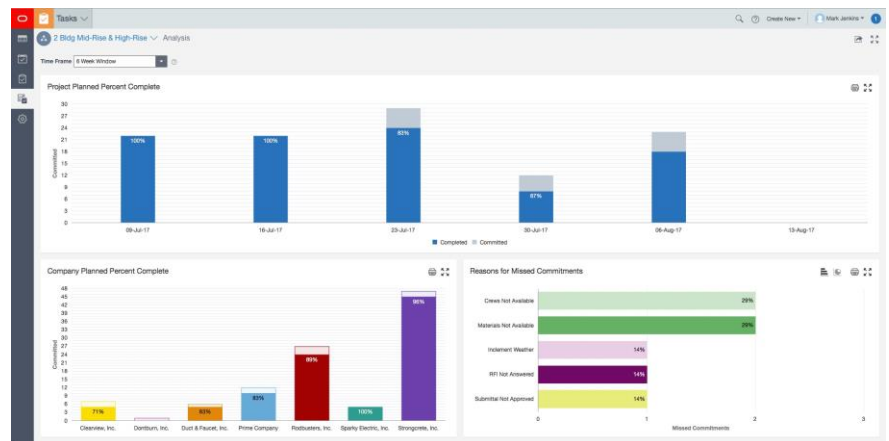


Figure 7B. Task analysis makes monitoring weekly performance and root causes simple

## Field Management

Oracle Prime makes the management of critical jobsite documents and the execution of project processes clean, simple, and easy. The ability to digitize information, streamline processes and automate where possible, ensures that field teams are working with the most accurate and up-to-date project data. These capabilities, in turn, increase the accuracy of work, drive project accountability, and improve jobsite performance.

Drawing management is a critical component at any jobsite as the industry moves from paper-based to digital project drawings.

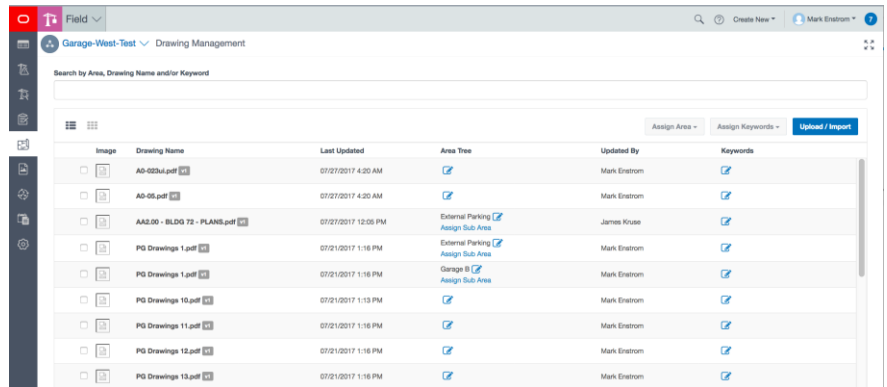


Figure 8A. Search several drawings by area, name, and keywords

Issues and inspection management is critical. Quality, safety, and even punchlist issues are noted, tracked, and addressed right at the jobsite with Oracle Prime Field Collaboration tools. In addition, users can access daily reports that enable subcontractors to input information directly to the superintendent.

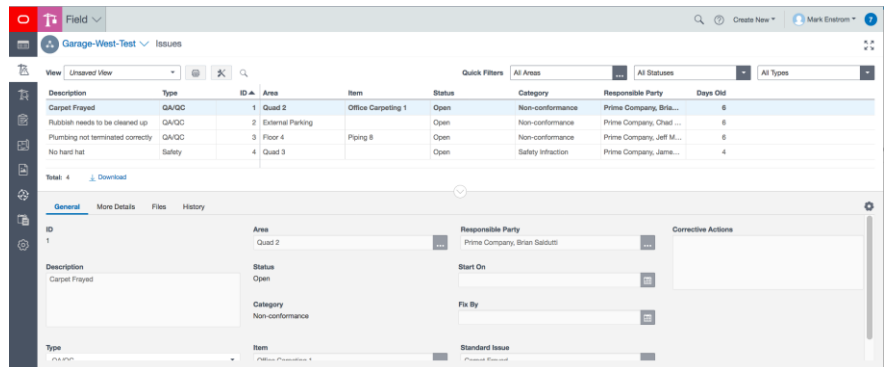


Figure 8B. View the list of safety and quality issues

Oracle' Prime features highly flexible and configurable commissioning capabilities to meet a wide range of requirements from simple to very complex.

## Document Exchange

The Document Exchange capability provides a robust way to manage project



submittals. Users can import submittals from a PDF of the project specification manual into the submittal log that is collaborative by design.

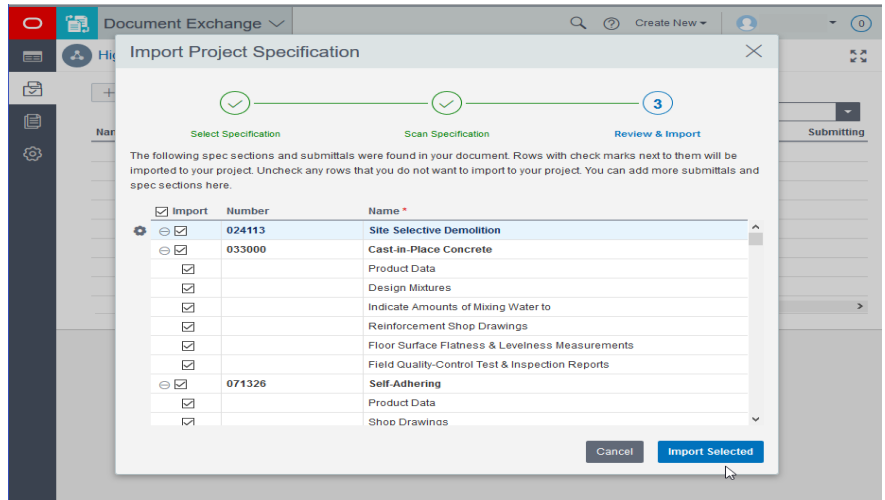


Figure 9A. Importing project specifications will automatically scan the spec sections and submittals

Automated workflows and email notifications keep the team informed of submittal progress. Users who access the submittal log can add a file when the ball is in their court. The solution provides an out-of-the-box workflow, which can also be configured to meet unique project needs.

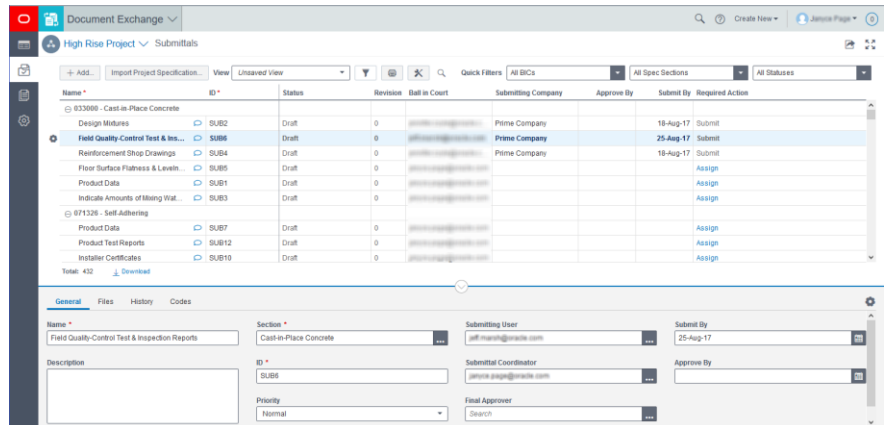


Figure 9B. View the specification sections and submittals metadata

## Mobile Interface

Oracle Prime's mobile suite connects progress made on the jobsite to those managing the project while providing executives and portfolio managers the tools they need on the go.

With targeted, purpose-built native mobile applications, Oracle Prime users enjoy powerful functionality with easy-to-use interfaces. Real-time data and alerts improve processes while allowing users to access information without internet connectivity.

## Oracle Prime Portfolios for iOS

While away from the office, executives and portfolio managers use the Oracle Prime Portfolios app to monitor the health and performance of project portfolios. It supports access to KPIs without internet connectivity. Users also can collaborate with team members with the discussions tool.

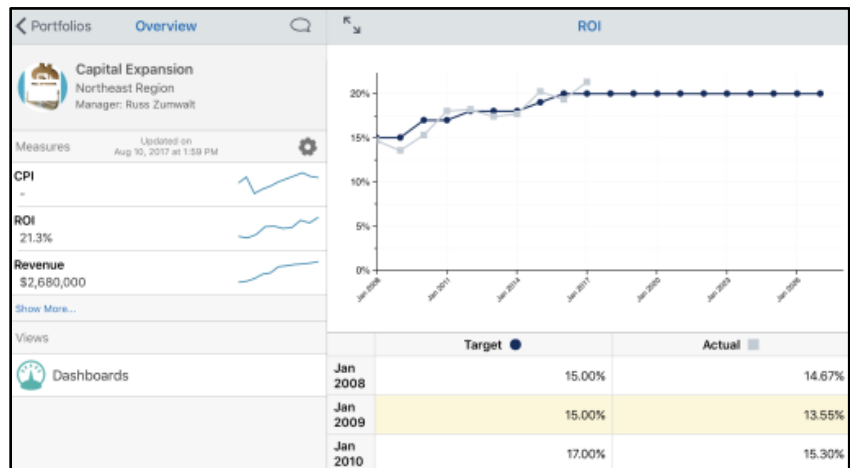


Figure 10A. Oracle Prime Portfolios app provides measures & KPIs on-the-go

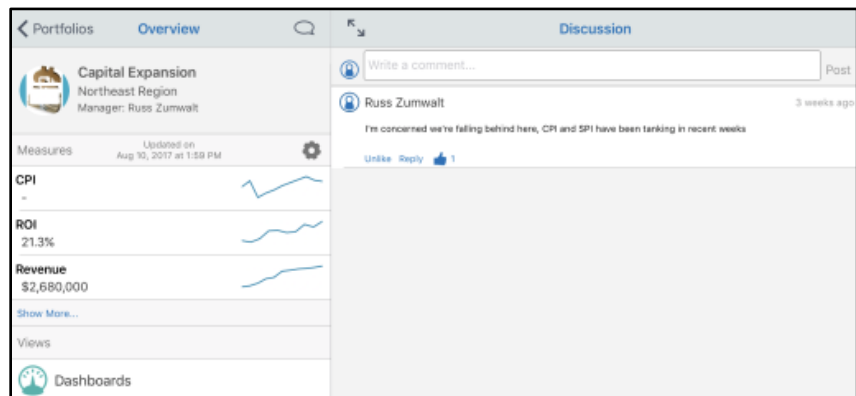


Figure 10B. The app allows team members to collaborate directly in a portfolio

## Oracle Prime Field for iOS

Site superintendents, project managers, and inspectors can use the Oracle Prime Field iOS app to access critical information and provide status updates for projects. Users can access and streamline key jobsite processes, including issues, reporting, inspections, commissioning, and drawings, in an easy-to-use native mobile app.

While walking the jobsite, superintendents, project managers, and inspectors can review and manage drawings and ensure the team is working on the same version. With area recognition and robust markup tools, users can create issues directly on a drawing and know exactly where the issue occurred. Users also can take photos and attach documents for reference and to monitor issue progress.

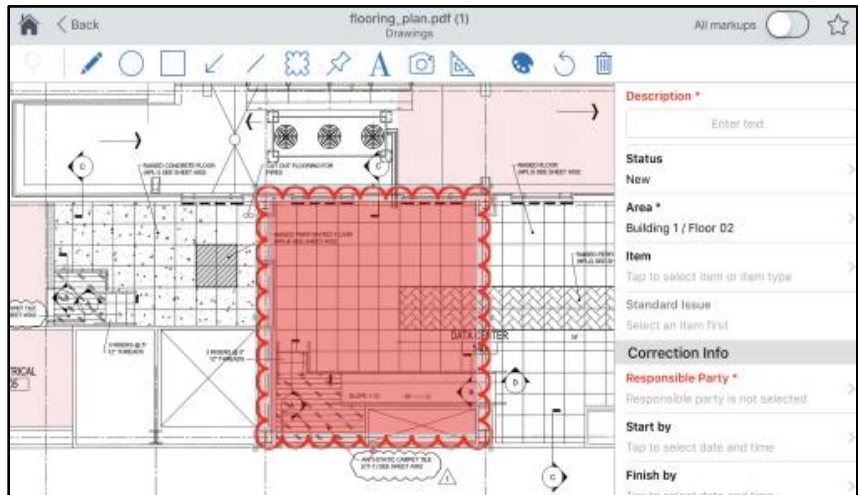


Figure 11A. Oracle Prime Field provides powerful drawing management functionality

In addition, the application enables users to track and resolve punchlist items in less time in a single aggregated location, even while offline. They also can customize workflows and monitor progress from a mobile device, increasing productivity gains. Field personnel can provide direct input from an iPad, saving time, reducing administrative burden, enabling more timely reporting, and eliminating errors related to handwritten notes.

## File Management

Oracle Prime includes robust file management functionality. Whether a high-level basis-of-design documents or detailed specifications, all documentation utilizes tight permission controls to manage access across the enterprise. Features include check-in and check-out, version control, and full text search for 500+ document types.

Built-in document viewing technology allows users to view most document types without the need to install a native application, reducing costs and complexity. Social features, including Discussions and Share functionality, enable users to review files and have greater context for more informed decision-making.

File management capabilities eliminate document duplication and allows users to link existing project files to activities, scope, field, cost, and submittals to ensure the most up-to-date and accurate information.

### CONTACT US

For more information, call 1-800-423-0245 (US) or +44-0-870-8-768711 (UK) to speak to an Oracle representative.

**ORACLE**

### CONNECT WITH US



[blogs.oracle.com/construction-engineering](https://blogs.oracle.com/construction-engineering)



[facebook.com/oracleprimavera](https://facebook.com/oracleprimavera)



[twitter.com/oracleppm](https://twitter.com/oracleppm)



[oracle.com/primavera](https://oracle.com/primavera)

### Integrated Cloud Applications & Platform Services

Copyright © 2017, Oracle and/or its affiliates. All rights reserved. This document is provided for information purposes only, and the contents hereof are subject to change without notice. This document is not warranted to be error-free, nor subject to any other warranties or conditions, whether expressed orally or implied in law, including implied warranties and conditions of merchantability or fitness for a particular purpose. We specifically disclaim any liability with respect to this document, and no contractual obligations are formed either directly or indirectly by this document. This document may not be reproduced or transmitted in any form or by any means, electronic or mechanical, for any purpose, without our prior written permission.

Oracle and Java are registered trademarks of Oracle and/or its affiliates. Other names may be trademarks of their respective owners.

Intel and Intel Xeon are trademarks or registered trademarks of Intel Corporation. All SPARC trademarks are used under license and are trademarks or registered trademarks of SPARC International, Inc. AMD, Opteron, the AMD logo, and the AMD Opteron logo are trademarks or registered trademarks of Advanced Micro Devices. UNIX is a registered trademark of The Open Group. 0917



Oracle is committed to developing practices and products that help protect the environment